



**Custom Tin Box Manufacturer in China — OEM Metal Packaging for UK & EU Brands | Factory Direct | UK B2B Tin Box Supplier | Food-Grade Certified | MOQ from 3,000 pcs**

**Our Product Introduction**

**Basic Information**

- Place of Origin: China
- Brand Name: Huaiyang
- Certification: ISO, Sedex, BRC, FDA, etc
- Model Number: HY-318
- Minimum Order Quantity: 3000 pcs
- Price: US\$1.0-2.0 per piece, FOB Shenzhen
- Packaging Details: With polybag or with cardboard divider, into master carton
- Delivery Time: 25-35 days
- Payment Terms: 30% deposit, balance COD or L/C
- Supply Ability: 10000 pcs per day



**Product Specification**

- Printing Technology: Offset Printing
- Shape: Customized
- Size: 285x245x55 MM
- Usage: Packing Or Storage
- Country Of Origin: China
- Color: Multicolor With Printed Design
- Surface Treatment: Clear Varnish
- Loading Port: Shenzhen Or Guangzhou



**More Images**



## Product Description

We are a direct metal tin box manufacturer — not a trading company!

Our custom tin boxes are designed for brands seeking durable, attractive, and versatile metal packaging solutions. Crafted from high-quality tinplate, these versatile tin boxes are widely used for gourmet foods, premium gifts, retail products, collectibles, and promotional packaging.

As an experienced tin box manufacturer, we provide comprehensive OEM & ODM services, supporting custom dimensions, structures, printing techniques, and surface finishes to ensure your product stands out on any display.



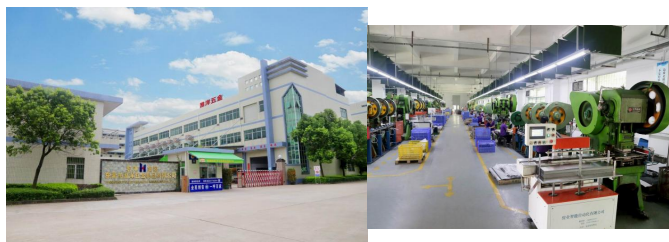
### Highlight:

All of our tin boxes are custom-made based on client requirements, so the tin you see may not necessarily fit your needs. With over 1,000 product options and a wide range of dimensions available, we encourage you to contact us directly. Please share the specific dimensions you require or the size of the item to be packaged, and we will recommend the most suitable tin box for you.

Please send an inquiry to below email address:

[sales@tins-can.com](mailto:sales@tins-can.com)

### Factory Quick-View





### Factory Certifications



To see the details of each certificate, please check link below:

<https://www.tins-can.com/quality.html>

### Packing & Delivery

Packing is normally one of below 3 methods



With cardboard boxes directly

1 polybag per tin

Wrapped with MG tissue paper per tin



Our tins are typically shipped in standard ocean containers for cost-effective and secure transportation.

### Factory Video Introduction

### Why Choose Us

Why UK Brands Choose Us as Their Custom Tin Box Manufacturer

- ✓ Direct Factory — No Middleman
- ✓ 10+ Years of Metal Packaging Experience
- ✓ Export to UK, EU & USA
- ✓ In-House Printing & Tooling
- ✓ Food-Grade Coating Inside

## Frequently Asked Questions by UK Buyers

**Q1: What is your MOQ?**

MOQ starts from **3,000 pcs**, depending on size and design.

**Q2: Are your tins food-grade?**

Yes, all tins comply with **EU food contact standards**.

**Q3: Can you ship to the UK?**

Yes, we have **rich export experience to the UK & Europe**.

**Q4: Can I get samples?**

Samples are available before mass production.

**Q5: What is the lead time?**

Sample: 7–10 days

Mass production: 25–35 days

**For more custom tin boxes, please contact us:**

**[sales@tins-can.com](mailto:sales@tins-can.com)**



**Dongguan Huaiyang Metal Manufacture Co., Limited**



+8613798454757



sales@tins-can.com



tins-can.com

Yibo Industrial Park(No.1), Xiajia Village Group, Caole Village, Xiegang Town, Dongguan City, Guangdong Province, China (PC: 523592)